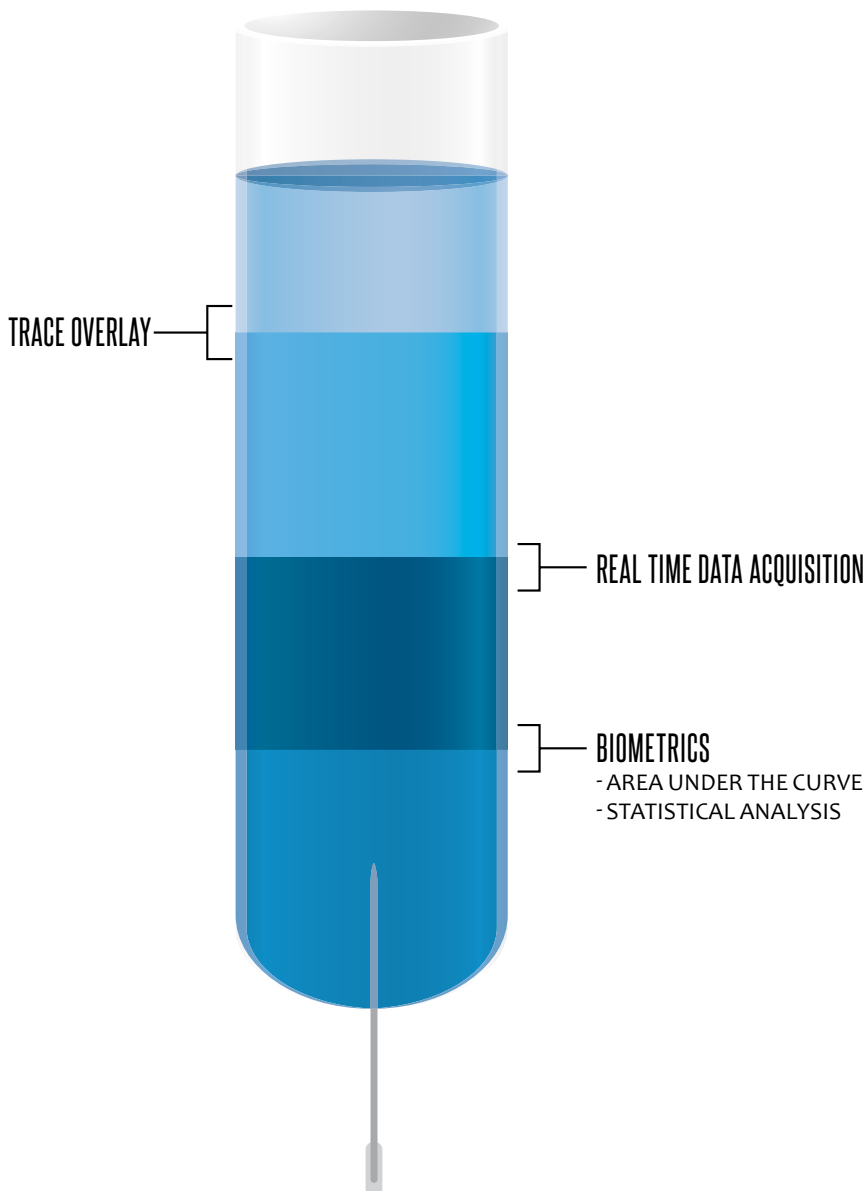


BRANDEL

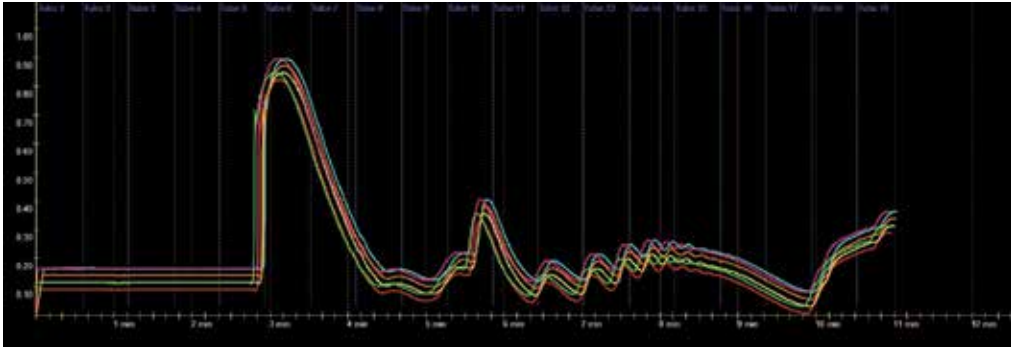


PEAK CHART DATA ACQUISITION SOFTWARE

WHAT IS PEAK CHART?

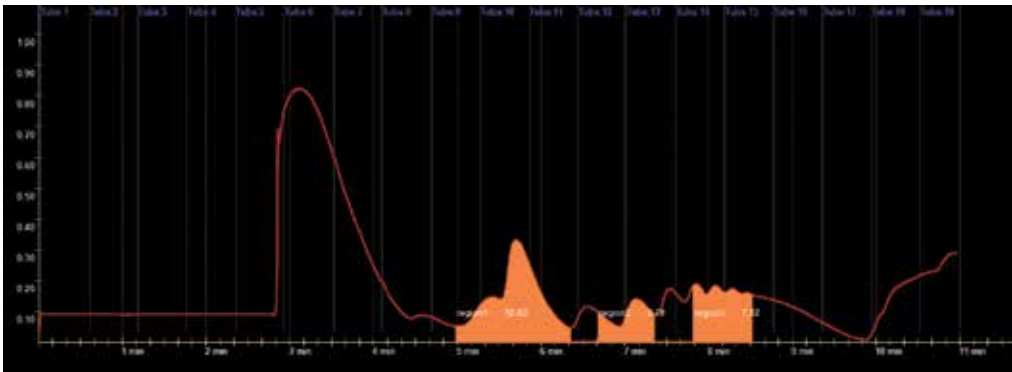
PEAK CHART is a Windows-based data acquisition and sample component (peak) tracking software program. Using an analog out-put signal from any chromatographic detector such as UV-Vis, conductivity, refractive index or radioactivity. The separation data is displayed along with the sample number for easy identification of sample component and/or peak placement in the collected fractions.

TRACE OVERLAY



The trace overlay graphic editor allows for the comparison of multiple traces. This includes the ability to synchronize both the trace start times and the absorbance.

AREA UNDER THE CURVE



By using a simple drag of the mouse, specific regions can be highlighted and quantified (area under the curve). Multiple regions within a trace can also be defined. Further, the biometric editor allows for refining regions.

STATISTICAL ANALYSIS

Region	AOC1	AOC2	AOC3	AOC4	AOC5	AOC6
region1	12.43	12.5	11.58	11.8	12.85	11.7
region2	3.79	3.6	3.28	3.48	3.81	3.59
region3	7.12	7.9	8.17	7.29	5.99	5.48



Also included in the biometric editor is the ability to compare the area under the curve from multiple traces. An Excel file is also automatically generated which can be converted into a graphic representation of the region comparisons.

BENEFITS

- Run Profiles are easily edited
- Automatically generates files at the end of a run
- Import data directly into other Windows-based applications
- Simplified management
- Complete data set saved in both text and Excel format
- Each project file can contain up to 1000 runs or samples



Data Acquisition Software

FEATURES

- Data captured real time at a rate of one data point per 100ms
- Input voltage range from 0 – 2 volts
- Traces can be recorded from 30 minutes to 2 hours
- Trace resolution from 2 – 32 pixels per seconds
- Markers that correlate to the indexing of the collection tube
- “On the fly” selectable color scheme, resolution, and line width
- Charts saved in 32 bit (256 colors) Bitmap
- Position markers that identify voltage and time on any chart
- Overlay of up to 5 previous traces using user defined colors
- Easily synchronize any trace overlay with a master trace
- Compute area under any peak
- Easily creates and organizes projects
- Each run produces a unique directory that contains a Bitmap, Excel file, text file and the data file acquired from the recorder

BRANDEL, INC

8561 Atlas Drive, Gaithersburg, MD 20877 USA

Telephone: 800-948-6506 | Fax:301-869-5570

sales@brandel.com | www.brandel.com